

# KARIBAN

1/2

REFERENCE : K442

NAME :

SIZES : XS\_S\_M\_L\_XL\_XXL\_3XL\_4XL

**COMPOSITION :**

Main fabric : Brushed Cotton / Polyester fleece 360  
80%cotton / 20%polyester

**WEIGHT :**

Main fabric : 360 gsm

**FABRIC CONSTRUCTION AND FINISHING :**

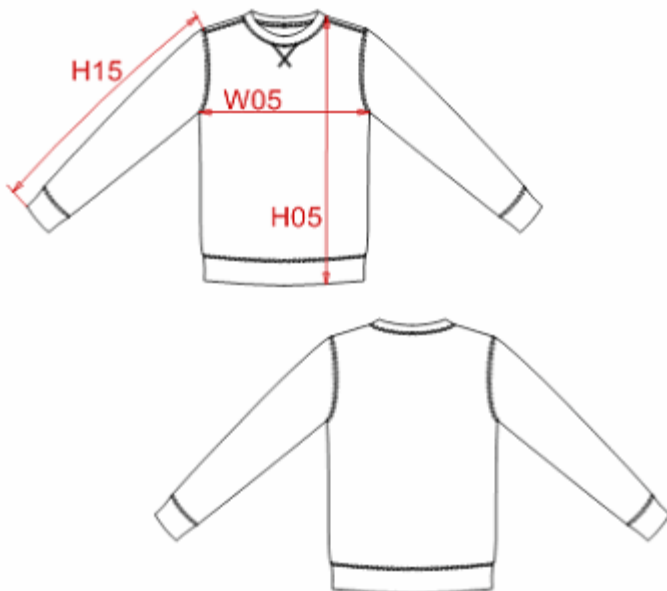
28/1's 75D & 10/1's - 20GG Low shrinkage / Silicon finish

COLORS	PANTONE SERIGRAPHIE
White	White
Black	Black
Navy	296C
Dark grey	432C
Red	186C
Dark khaki	418C
Light royal blue	2935C
Oxford grey	Cool gray 6C

**DESCRIPTION**

**Français :** Sweat-shirt encolure ronde  
**English :** Crew neck sweatshirt  
**Nederlands :** Sweater met ronde hals  
**Deutsch :** Rundhals sweatshirt  
**Español :** Sudadera cuello redondo  
**Italiano :** Felpa girocollo  
**Português :** Sweatshirt com decote redondo

**CARE LABEL**



**MEASUREMENT**

Description	XS	S	M	L	XL	2XL	3XL	4XL		
<b>H05</b> Hauteur totale avec BC / Total height with rib	67,50	69,50	71,50	73,50	75,50	77,50	80,25	83		
<b>W05</b> 1/2 largeur poitrine / 1/2 chest width	51	54	57	60	63	66	70	74		
<b>H15</b> Longueur manche avec BC / Sleeve length with rib	63	65	67	69	71	73	75	77		

**PACKING**

Box	
	20 pcs / box
	XS => L:55cm W:37.8cm H:36cm GW:10.45kg NW:8.80kg
	S => L:55cm W:37.8cm H:36cm GW:10.95kg NW:9.30kg
	M => L:55cm W:37.8cm H:36cm GW:11.65kg NW:10.00kg
	L => L:60cm W:37.8cm H:36cm GW:12.40kg NW:10.75kg
	XL => L:60cm W:37.8cm H:36cm GW:13.15kg NW:11.50kg
	XXL => L:68cm W:37.8cm H:36cm GW:14.25kg NW:12.60kg
	3XL => L:68cm W:37.8cm H:36cm GW:15.25kg NW:13.60kg
	4XL => L:68cm W:37.8cm H:36cm GW:16.00kg NW:14.35kg