

KARIBAN

1/2

REFERENCE : K632

NAME : EAGLE II

SIZES : S_M_L_XL_XXL_3XL_4XL

COMPOSITION :

Main fabric : Nylon 210T AC coating 70 For dark colors only 100% polyamide
 Main fabric : Nylon 210T milky coating 70 For light colors only 100%polyamide
 Lining 1 : Polytricot lining 100%polyester
 Mesh : Mesh 65 100%polyester
 Lining 2 : Lining 210T For inner sleeves 100%polyester

WEIGHT :

Main fabric : 70 gsm
 Main fabric : 70 gsm
 Lining 1 : 150 gsm
 Mesh : 65 gsm
 Lining 2 : 60 gsm

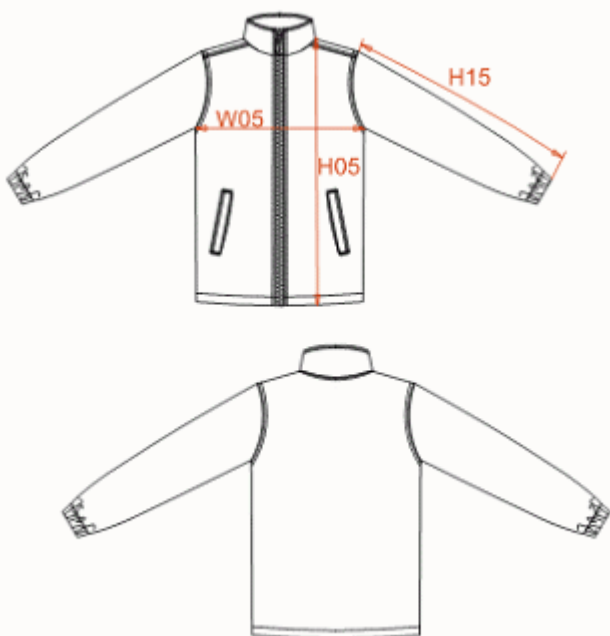
FABRIC CONSTRUCTION AND FINISHING :

Acrylic coating

COLORS	PANTONE SERIGRAPHIE
Black	Black
Navy	296C
Red	186C

DESCRIPTION

Français : Coupe-vent doublé
English : Lined windbreaker
Nederlands : Gevoerde windbreaker
Deutsch : Gefütterte windjacke
Español : Cortaviento forrado
Italiano : Giacca a vento foderata
Português : Cortavento windbreaker



MEASUREMENT

Description	S	M	L	XL	2XL	3XL	4XL
H05 Hauteur totale / Total height	77,15	79,15	81,15	83,15	85,90	88,65	90,65
W05 1/2 largeur poitrine / 1/2 chest width	58	61	64	67	71	75	78
H15 Longueur manche avec poignet / Sleeve length with cuff	64,15	66,05	68	69,90	72,05	74,15	76,10

PACKING

Box	25 pcs / box S-L => L:66cm W:46cm H:20cm GW:12.30kg NW:10.80kg XL-XXL => L:67cm W:48cm H:20cm GW:12.30kg NW:10.80kg 3XL => L:67cm W:48cm H:20cm GW:13.00kg NW:11.00kg 4XL => L:79cm W:56cm H:20cm GW:13.00kg NW:11.00kg
-----	---

CARE LABEL

