

PR657 Long Sleeve Chef's Jacket

Description

A long sleeve chef's jacket with a ten button wrap over fastening. To withstand the demands of repeated washing, the buttons are long life resin. Styled with a mandarin collar.

Product Features:

- Ten button hole wrap over fastening
- Mandarin collar
- High quality, long life resin buttons

Available In:

XS, S, M, L, XL, 2XL, 3XL, 4XL

Certifications:

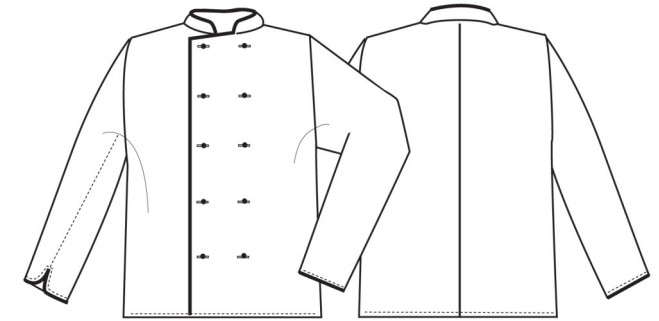


Colours:

| Colour | Pantone | C | M | Y | K |
|--------|---------|----|----|----|-----|
| Black | Black c | 0 | 0 | 0 | 100 |
| Steel | 431c | 45 | 25 | 16 | 59 |
| White | White | 0 | 0 | 0 | 0 |

Fabric:

65% Polyester, 35% Cotton Twill, 195gsm.



Suggested Decoration:

Screen Print, Transfer Print, Embroidery

Country of Origin:

Bangladesh

Commodity Code:

6211331000

Features:



Wash Care:



Carton Information:

| Sizes | Carton | Pack | SKU's | Carton Weight | Carton Dimensions |
|-----------|--------|------|-------|---------------|-------------------|
| All Sizes | 24 | 6 | 24 | 8kg approx. | 60cmx40cmx22cm |

Garment Sizes:

| Call size | XS | S | M | L | XL | 2XL | 3XL | 4XL |
|-----------------|----|-----|-----|-----|-----|-----|-----|-----|
| Chest to fit" | 30 | 34 | 38 | 42 | 46 | 50 | 54 | 58 |
| Chest to fit cm | 77 | 87 | 96 | 107 | 117 | 126 | 136 | 146 |
| Chest actual cm | 98 | 106 | 114 | 122 | 130 | 138 | 146 | 154 |
| Back length cm | 76 | 76 | 76 | 76 | 76 | 76 | 76 | 76 |