

MEN PADDED JACKET

## STJM836 - STANLEY CLIMBER



### WHITES



OFF WHITE

### COLORS



BLACK



DEEP METAL



BRITISH KHAKI



ROYAL BLUE



FRENCH NAVY



RED



FLAME ORANGE

### The men's body warmer

#### Fitted

- Sleeveless
- High collar
- Reverse nylon zip at center front
- Zipped welt pockets with extra grosgrain puller
- Elastic tape binding at armhole
- Fully quilted
- Side panels for better shape
- Inside seams with binding finish
- Bottom hem with adjustable plastic stopper and elastic cord
- 

#### Combo options



Stella Climber

Shell : Plain Weave , 100% Polyester - Recycled , Fluorine-free DWR , 75 GSM

Padding : 100% Polyester - Recycled , 175 GSM

Lining : Plain Weave , 100% Polyester - Recycled , Fluorine-free DWR , 75 GSM

#### Printing Specifications

For suitable print techniques, please download our printing guide

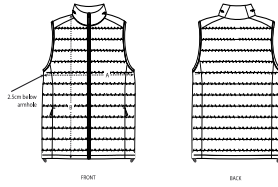
#### Certifications & memberships



#### Wash Instructions

Wash similar colours together, no ironing, wash inside out. Close all zips before washing.





SIZES		S	M	L	XL	XXL	3XL
A	Half Chest	53.5	56	59.5	63	66.5	70
B	Body Length	65	68.5	70.5	72.5	74.5	76.5

### PACKING

SIZES	S	M	L	XL	XXL	3XL
PCS/BAG	5	5	5	5	5	5
PCS/BOX	10	10	10	10	10	10